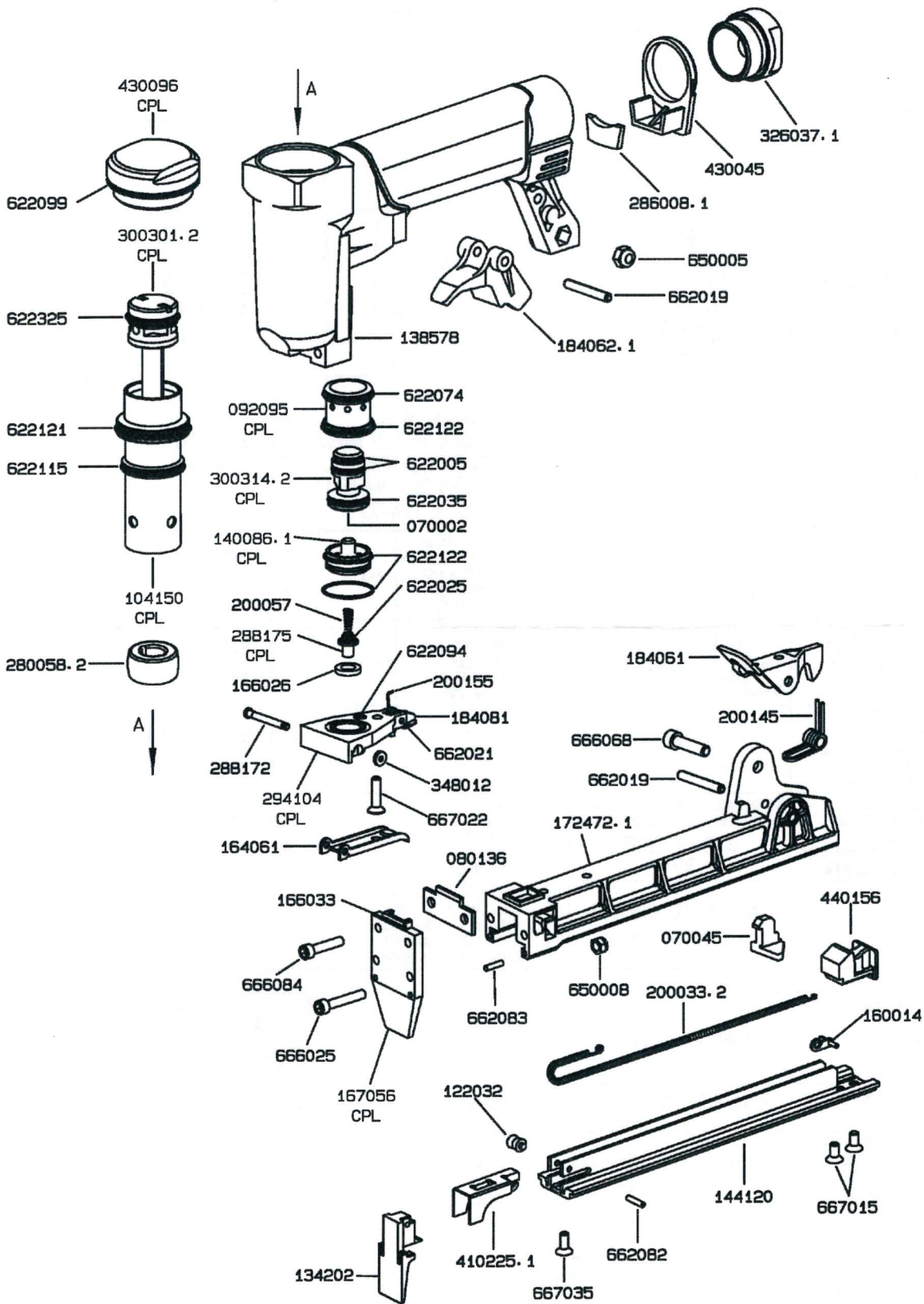


F1B80-16

USE, MAINTENANCE & SPARE PARTS MANUAL



| TECHNICAL DATA | | Type of Fastener |
|---|---|------------------|
| Fastener Data: <ul style="list-style-type: none"> • Outside Crown 12.80mm • Inside Crown 11.30mm • Wire 0.60 x 0.90mm • Length 6-16mm • Magazine Capacity 140 staples | | |
| Min-Max Working pressure | 4 / 7 bar 60 / 100 psi | |
| Air consumption per cycle | 0.37 L | |
| Weight kg | 0.78kg | |
| Tool dimensions height x width x length (mm) | 157 x 42 x 218 | |
| Noise characteristics | 81.30 dB L _{pA} 92.12dB L _{WA} | |
| Actuation System | 1 (Safety:Manual) | |
| Loading | Bottom loading | |
| Lubricant | BCNZ617 oil | |
| | | |



| Code | RSP | Qty | Description |
|----------|-----|-----|---------------|
| 070002 | R | 1 | BUFFER |
| 070045.1 | R | 1 | BUFFER |
| 080136 | | 1 | REST |
| 092095 | | 1 | BUSH |
| 104150 | | 1 | CYLINDER |
| 122032 | | 1 | PULLEY |
| 134202 | | 1 | NOSE RAIL |
| 138578 | | 1 | BODY |
| 140086.1 | | 1 | TRIGGER VALVE |
| 144120 | | 1 | SLIDER |
| 160014 | | 2 | HOOK |
| 164061 | | 1 | TRIGGER |
| 166026 | R | 1 | GASKET |
| 166033 | R | 1 | GASKET |
| 167056 | | 1 | PLATE |
| 172472.1 | | 1 | LOADER |
| 184061 | | 1 | CATCH |
| 184062.1 | | 1 | CATCH |
| 184081 | | 1 | CATCH |
| 200033.2 | R | 1 | SPRING |
| 200057 | R | 1 | SPRING |
| 200145 | R | 1 | SPRING |
| 200155 | R | 1 | SPRING |
| 280058.2 | R | 1 | BUMPER |
| 286008.1 | | 1 | MUFFLER |
| 288172 | | 1 | PIN |
| 288175 | | 1 | PIN |
| 294104 | | 1 | PLATE |
| 300301.2 | R | 1 | DRIVER PISTON |
| 300314.2 | | 1 | PISTON |
| 326037.1 | | 1 | ADAPTER |
| 348012 | | 1 | SPACER |
| 410225.1 | R | 1 | PUSHER |
| 430045 | | 1 | COVER |
| 430096 | | 1 | CAP |
| 440156 | | 1 | SLOT |
| 622005 | R | 2 | O-RING |
| 622025 | R | 1 | O-RING |
| 622035 | R | 1 | O-RING |
| 622074 | R | 1 | O-RING |
| 622094 | R | 1 | O-RING |
| 622099 | R | 1 | O-RING |
| 622115 | R | 1 | O-RING |
| 622121 | R | 1 | O-RING |
| 622122 | R | 3 | O-RING |
| 622325 | R | 1 | O-RING |
| 650005 | R | 1 | NUT |
| 650008 | R | 2 | NUT |
| 662019 | R | 1 | PIN |
| 662021 | R | 1 | PIN |
| 662082 | R | 1 | PIN |
| 662083 | R | 2 | PIN |
| 666025 | R | 2 | SCREW |
| 666068 | R | 1 | SCREW |
| 666084 | R | 2 | SCREW |
| 667015 | R | 2 | SCREW |
| 667022 | R | 1 | SCREW |
| 667035 | R | 1 | SCREW |

R = Recommended spare parts